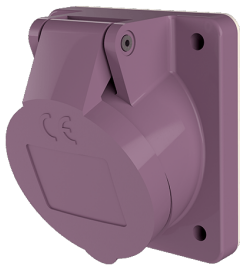


Panel mounted receptacle

Part no. 1270

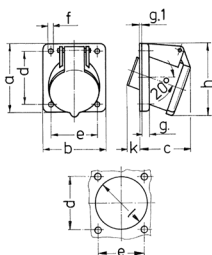


- screw terminals
- 20° inclination

Technical specifications

| | |
|---------------------------|-----------------|
| Ampere | 16 A |
| Poles | 2 p |
| Voltage | 20-25 V |
| Hertz | 50-60 Hz |
| Connection technology | Screw terminals |
| Contact | standard |
| Protection type | IP 44 |
| Flange | 68x62 mm |
| Fixing hole | 53x47 mm |
| Inclination | 20 ° |
| Weight | 125 g |
| Declaration of Conformity | EAC |

Drawing



| Drawing 1 MB 231 | Amp. Poles | 16 | | 32 | |
|--|---------------|-----|-----|-----|-----|
| | | 2 | 3 | 2 | 3 |
| Dim. in mm | a | 68 | 68 | 68 | 68 |
| | b | 62 | 62 | 62 | 62 |
| | c | 42 | 42 | 42 | 42 |
| | d | 53 | 53 | 53 | 53 |
| | e | 47 | 47 | 47 | 47 |
| | f | 4.5 | 4.5 | 4.5 | 4.5 |
| | g. | 8 | 8 | 8 | 8 |
| | g.1 | 2 | 2 | 2 | 2 |
| | h | 72 | 72 | 72 | 72 |
| | k | 32 | 32 | 32 | 32 |
| | l | 55 | 55 | 55 | 55 |
| Terminal for cond. cross section (mm ²) min.-max. | | 4 | 4 | 4 | 4 |
| | | -10 | -10 | -10 | -10 |