

## Panel mounted receptacle

Part no. 1395ZD

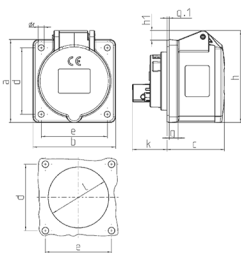


- screw terminals straight

## Technical specifications

|                           |                 |
|---------------------------|-----------------|
| Ampere                    | 32 A            |
| Poles                     | 3 p             |
| Voltage                   | 230 V           |
| Clock position            | 6 h             |
| Hertz                     | 50-60 Hz        |
| Connection technology     | Screw terminals |
| Contact                   | standard        |
| Protection type           | IP 44           |
| Flange                    | 75x75 mm        |
| Fixing hole               | 60x60 mm        |
| Weight                    | 203 g           |
| Declaration of Conformity | EAC             |

## Drawing



| Drawing<br>1 MB 247  | Amp.<br>Poles | 16  |     |     | 32  |     |     |
|--|---------------|-----|-----|-----|-----|-----|-----|
|  |               | 3   | 4   | 5   | 3   | 4   | 5   |
| Dim. in mm   | a             | 75  | 75  | 75  | 75  | 75  | 75  |
|  | b             | 75  | 75  | 75  | 75  | 75  | 75  |
|  | c             | 53  | 53  | 53  | 64  | 64  | 65  |
|  | d             | 60  | 60  | 60  | 60  | 60  | 60  |
|  | e             | 60  | 60  | 60  | 60  | 60  | 60  |
|  | f             | 5.5 | 5.5 | 5.5 | 5.5 | 5.5 | 5.5 |
|  | g             | 8   | 8   | 8   | 8   | 8   | 8   |
|  | g-1           | 2   | 2   | 2   | 2   | 2   | 2   |
|  | h             | 75  | 80  | 83  | 89  | 89  | 100 |
|  | h1            |     | 6   | 8   | 11  | 11  | 12  |
|  | k             | 31  | 32  | 32  | 39  | 39  | 39  |
|  | l             | 43  | 52  | 54  | 58  | 58  | 62  |
| Terminal for cond. cross<br>section (mm <sup>2</sup> ) min.-max. |               | 1.5 | 1.5 | 1.5 | 2.5 | 2.5 | 2.5 |
|  |               | -4  | -4  | -4  | -10 | -10 | -10 |