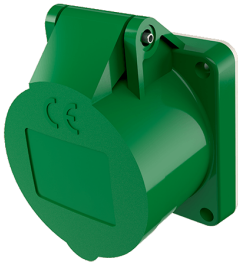


Panel mounted receptacle

Part no. 625

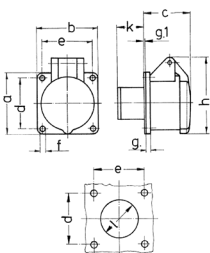


- screw terminals straight

Technical specifications

| | |
|---------------------------|-----------------|
| Ampere | 32 A |
| Poles | 3 p |
| Voltage | 20-25, 40-50 V |
| Clock position | 4 h |
| Hertz | 100-200 Hz |
| Connection technology | Screw terminals |
| Contact | standard |
| Protection type | IP 44 |
| Flange | 55x55 mm |
| Fixing hole | 45x45 mm |
| Weight | 130 g |
| Declaration of Conformity | EAC, CQC |

Drawing



| Drawing 1 MB 136 | Amp. Poles | 16 | | 32 | |
|--|---------------|-----|-----|-----|-----|
| | | 2 | 3 | 2 | 3 |
| Dim. in mm | a | 55 | 55 | 55 | 55 |
| | b | 55 | 55 | 55 | 55 |
| | c | 44 | 44 | 44 | 44 |
| | d | 45 | 45 | 45 | 45 |
| | e | 45 | 45 | 45 | 45 |
| | f | 4.2 | 4.2 | 4.2 | 4.2 |
| | g. | 8 | 8 | 8 | 8 |
| | g.1 | 2 | 2 | 2 | 2 |
| | h | 67 | 67 | 67 | 67 |
| | k | 22 | 22 | 22 | 22 |
| | l | 34 | 34 | 34 | 34 |
| Terminal for cond. cross section (mm ²) min.-max. | | 4 | 4 | 4 | 4 |
| | | -10 | -10 | -10 | -10 |